



**NEOTERRA**  
Drive The New World

PASSENGER · LIGHT TRUCK



DARRON CENTER, NO.180 HAIER ROAD | QINGDAO, CHINA | 86-532-55579148 | INFO@KETERTYRE.COM

[WWW.NEOTERRATIREUSA.COM](http://WWW.NEOTERRATIREUSA.COM)



**NEOTERRA**  
Drive The New World

# PRODUCT CATALOG

2023-2024



DRIVE THE NEW WORLD!





CONTENTS

**PASSENGER**

**LIGHT TRUCK**



**NEOTOUR**  
Performance  
Touring



**NEOSPORT**  
Ultra High  
Performance



**NEOTRAC**  
Highway  
Terrain



**NEOTRAX**  
All Terrain



**NEOMAX-RT**  
Rugged Terrain



**NEOMAX-MT**  
Mud Terrain



# NEOTOUR

Performance Touring



## NEOTOUR SIZE & SPECIFICATION

SIZE	LOAD INDEX / SPEED SYMBOL	STANDARD RIM	OVERALL DIAMETER (mm/in)	SECTION WIDTH (mm/in)	TREAD DEPTH (mm/32nds)
185/60R15	84 / H	5½J	603 / 23.7	189 / 7.4	7.6 / 9.6
185/65R15	88 / H	5½J	621 / 24.4	189 / 7.4	7.6 / 9.6
195/50R15	82 / V	6J	577 / 22.7	201 / 7.9	7.4 / 9.3
195/55R15	85 / V	6J	595 / 23.4	201 / 7.9	7.4 / 9.3
195/60R15	88 / H	6J	615 / 24.2	201 / 7.9	7.6 / 9.6
195/65R15	91 / H	6J	635 / 25.0	201 / 7.9	7.6 / 9.6
205/60R15	91 / H	6J	627 / 24.7	209 / 8.2	7.6 / 9.6
205/65R15	94 / V	6J	647 / 25.5	209 / 8.2	8.0 / 10.1
205/70R15	96 / H	6J	710 / 28.0	209 / 8.2	8.0 / 10.1
215/60R15	94 / H	6½J	639 / 25.2	221 / 8.7	8.0 / 10.1
215/65R15	100XL / H	6½J	661 / 26.0	221 / 8.7	8.0 / 10.1
215/70R15	98 / H	6½J	683 / 26.9	221 / 8.7	8.0 / 10.1
195/60R16	89 / V	6J	640 / 25.2	201 / 7.9	7.6 / 9.6
195/65R16	92 / H	6J	660 / 26.0	201 / 7.9	7.6 / 9.6
205/55R16	91 / V	6½J	632 / 24.9	214 / 8.4	7.6 / 9.6
205/60R16	92 / V	6J	652 / 25.7	209 / 8.2	7.6 / 9.6
205/65R16	95 / V	6J	672 / 26.5	209 / 8.2	8.0 / 10.1
215/55R16	93 / V	7J	642 / 25.3	226 / 8.9	7.6 / 9.6
215/60R16	95 / V	6½J	664 / 26.1	221 / 8.7	8.0 / 10.1
215/65R16	98 / H	6½J	686 / 27.0	221 / 8.7	8.0 / 10.1
215/70R16	100 / H	6½J	708 / 27.9	221 / 8.7	8.0 / 10.1
225/60R16	98 / H	6½J	676 / 26.6	228 / 9.0	8.0 / 10.1
225/70R16	103 / H	6½J	722 / 28.4	228 / 9.0	8.0 / 10.1
235/70R16	106 / H	7J	736 / 29.0	240 / 9.4	8.0 / 10.1
215/55R17	98XL / V	7J	668 / 26.3	226 / 8.9	7.6 / 9.6
215/60R17	96 / H	6½J	690 / 27.2	221 / 8.7	8.0 / 10.1
225/50R17	98XL / V	7J	658 / 25.9	233 / 9.2	7.6 / 9.6
225/65R17	102 / H	6½J	724 / 28.5	228 / 9.0	8.0 / 10.1
235/60R17	102 / H	7J	714 / 28.1	240 / 9.4	8.0 / 10.1
235/65R17	108XL / H	7J	738 / 29.1	240 / 9.4	8.0 / 10.1



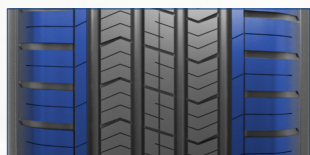
**Long Tread Life**

Special formulated compound with enhanced shoulder construction ensures even wear and long last tread life.



**All Weather Traction**

Advanced tread design with four wide long grooves provides excellent wet and dry performance in all weather conditions.



**Quiet & Comfort Ride**

Optimized tread pitch width and alignment design provides an exceptional quiet and comfortable ride.



**NEOSPORT** SIZE & SPECIFICATION

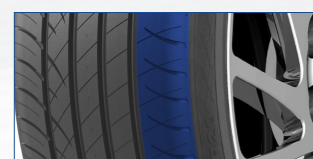
# NEOSPORT

Ultra High Performance



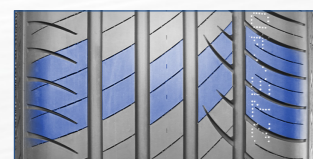
**Superior Responsiveness**

Proven asymmetric tread provides precise, race-inspired handling on wet or dry conditions.



**Cornering Stability**

Specifically enhanced shoulder design maintains even tread pressure to improve grip while cornering.



**Ultra Quiet Ride**

Advanced tread block pattern and optimized pitch alignment greatly reduce excessive road noise.

SIZE	LOAD INDEX / SPEED SYMBOL	STANDARD RIM	OVERALL DIAMETER (mm/in)	SECTION WIDTH (mm/in)	TREAD DEPTH (mm/32nds)
205/40ZR17	84XL / W	7½J	596 / 23.5	212 / 8.3	7.6 / 9.6
205/50ZR17	93XL / W	6½J	638 / 25.1	214 / 8.4	7.6 / 9.6
215/45ZR17	91XL / W	7J	626 / 24.6	213 / 8.4	7.6 / 9.6
215/50ZR17	95XL / W	7J	648 / 25.5	226 / 8.9	7.6 / 9.6
215/55ZR17	94 / W	7J	668 / 26.3	226 / 8.9	7.6 / 9.6
225/45ZR17	94XL / W	7½J	634 / 25.0	225 / 8.9	7.6 / 9.6
225/50ZR17	98XL / W	7J	658 / 25.9	233 / 9.2	7.6 / 9.6
225/55ZR17	97 / W	7J	680 / 26.8	233 / 9.2	7.6 / 9.6
225/60R17	99 / H	6½J	702 / 27.6	228 / 9.0	7.8 / 9.8
235/45ZR17	97XL / W	8J	644 / 25.4	236 / 9.3	7.6 / 9.6
235/55R17	103XL / V	7½J	690 / 27.2	245 / 9.6	7.6 / 9.6
245/45ZR17	99XL / W	8J	652 / 25.7	243 / 9.6	7.6 / 9.6
225/40ZR18	92XL / Y	8J	637 / 25.1	230 / 9.1	7.6 / 9.6
225/45ZR18	95XL / W	7½J	659 / 25.9	225 / 8.9	7.6 / 9.6
235/40ZR18	95XL / Y	8 ½J	645 / 25.4	241 / 9.5	7.6 / 9.6
235/45ZR18	98XL / Y	8J	669 / 26.3	236 / 9.3	7.6 / 9.6
235/50ZR18	97 / W	7½J	693 / 27.3	245 / 9.6	7.6 / 9.6
235/60R18	107XL / H	7J	739 / 29.1	240 / 9.4	7.8 / 9.8
245/40ZR18	97XL / W	8½J	653 / 25.7	248 / 9.8	7.6 / 9.6
245/45ZR18	100XL / W	8J	677 / 26.7	243 / 9.6	7.6 / 9.6
225/35ZR19	88XL / W	8J	641 / 25.2	230 / 9.1	7.6 / 9.6
235/35ZR19	91XL / W	8 ½J	647 / 25.5	241 / 9.5	7.6 / 9.6
235/40ZR19	96XL / W	8½J	671 / 26.4	241 / 9.5	7.6 / 9.6
245/40ZR19	98XL / Y	8 ½J	679 / 26.7	248 / 9.8	7.6 / 9.6
255/40ZR19	100XL / W	9J	687 / 27.0	260 / 10.2	7.6 / 9.6
225/35ZR20	90XL / Y	8J	666 / 26.2	230 / 9.1	7.6 / 9.6
245/35ZR20	95XL / Y	8½J	680 / 26.8	248 / 9.8	7.6 / 9.6
245/40ZR20	99XL / W	8 ½J	704 / 27.7	248 / 9.8	7.6 / 9.6
245/45ZR20	99 / Y	8J	728 / 28.7	243 / 9.6	7.6 / 9.6
245/50ZR20	102 / W	7½J	754 / 29.7	253 / 10.0	7.6 / 9.6
275/40ZR20	106XL / Y	9½J	728 / 28.7	278 / 10.9	7.8 / 9.8
265/35ZR22	102XL / Y	9½J	745 / 29.3	271 / 10.7	8.0 / 10.1
305/40ZR22	114XL / W	11J	803 / 31.6	313 / 12.3	8.0 / 10.1
305/35ZR24	112XL / W	11J	824 / 32.4	313 / 12.3	8.0 / 10.1
275/25ZR26	98XL / W	10J	798 / 31.4	283 / 11.1	8.0 / 10.1



# NEOTRAC

Highway Terrain

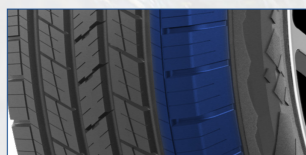
ROLLING RESISTANCE

WET PERFORMANCE

QUIETNESS

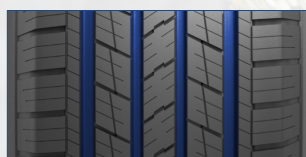
COMFORT

TREAD LIFE



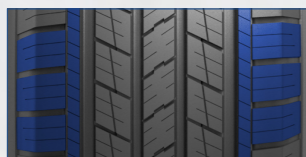
### Long Tread Life

Special formulated compound with enhanced shoulder construction ensures even wear and long last tread life.



### All Weather Traction

Advanced tread design with four wide long grooves provides excellent wet and dry performance in all weather conditions.



### Quiet & Comfort Ride

Optimized tread pitch width and alignment design provides an exceptional quiet and comfortable ride.

## NEOTRAC SIZE & SPECIFICATION

SIZE	PLY RATING / LOAD RANGE	LOAD INDEX / SPEED SYMBOL	STANDARD RIM	OVERALL DIAMETER	SECTION WIDTH	TREAD DEPTH
				(mm/in)	(mm/in)	(mm/32nds)
235/75R15		109XL / T	6½J	733 / 28.9	235 / 9.3	8.5 / 10.7
215/70R16		100 / H	6½J	708 / 27.9	221 / 8.7	8.5 / 10.7
225/70R16		103 / T	6½J	722 / 28.4	228 / 9.0	8.5 / 10.7
225/75R16		104 / H	6J	744 / 29.3	223 / 8.8	8.5 / 10.7
235/70R16		106 / T	7J	736 / 29.0	240 / 9.4	8.5 / 10.7
245/70R16		107 / T	7J	750 / 29.5	248 / 9.8	8.5 / 10.7
255/70R16		111 / T	7½J	764 / 30.1	260 / 10.2	8.5 / 10.7
265/70R16		112 / T	8J	778 / 30.6	272 / 10.7	8.5 / 10.7
265/75R16		106 / T	7½J	804 / 31.7	267 / 10.5	8.5 / 10.7
225/65R17		102 / H	6½J	724 / 28.5	228 / 9.0	8.5 / 10.7
235/65R17		108XL / H	7J	738 / 29.1	240 / 9.4	8.5 / 10.7
245/65R17		107 / T	7J	750 / 29.5	248 / 9.8	8.5 / 10.7
245/70R17		110 / T	7J	776 / 30.6	248 / 9.8	8.5 / 10.7
255/70R17		112 / T	7½J	790 / 31.1	260 / 10.2	8.5 / 10.7
265/65R17		112 / T	8J	776 / 30.6	272 / 10.7	8.5 / 10.7
265/70R17		115 / T	8J	804 / 31.7	272 / 10.7	8.5 / 10.7
235/60R18		103 / T	7J	739 / 29.1	240 / 9.9	8.5 / 10.7
235/65R18		106 / H	7J	763 / 30.0	240 / 9.4	8.5 / 10.7
245/60R18		105 / T	7J	751 / 29.6	248 / 9.8	8.5 / 10.7
255/55R18		105 / H	8J	737 / 29.0	265 / 10.4	8.5 / 10.7
255/65R18		111 / T	7½J	789 / 31.1	260 / 10.2	8.5 / 10.7
255/70R18		113 / T	7 ½J	815 / 32.1	260 / 10.2	8.5 / 10.7
265/60R18		110 / H	8J	775 / 30.5	272 / 10.7	8.5 / 10.7
265/65R18		114 / T	8J	801 / 31.5	272 / 10.7	8.5 / 10.7
265/70R18		116 / T	8J	829 / 32.6	272 / 10.7	8.5 / 10.7
275/65R18		116 / T	8J	815 / 32.1	279 / 11.0	8.5 / 10.7
255/60R19		109 / H	7½J	789 / 31.1	260 / 10.2	8.5 / 10.7
275/55R20		117XL / H	8½J	710 / 31.9	284 / 11.2	8.5 / 10.7
275/60R20		115 / T	8J	838 / 33.0	279 / 11.0	8.5 / 10.7
LT225/75R16	10 / E	115/112 / S	6J	750 / 29.5	223 / 8.8	10.0 / 12.6
LT245/75R16	10 / E	120/116 / S	7J	780 / 30.7	248 / 9.8	10.0 / 12.6



**NEOTRAX** SIZE & SPECIFICATION

**NEOTRAX**

All Terrain

ROLLING RESISTANCE

WET PERFORMANCE

QUIETNESS

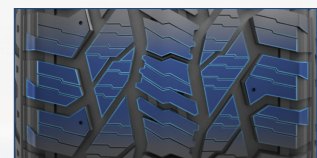
COMFORT

TREAD LIFE



**Superb Traction**

Open tread design with advanced compound provides superb allseason traction and versatile all-terrain performance.



**Enhanced Toughness**

The LT sizes constructed with true 3-belt and high strength steel package for enhanced toughness and rugged strength.



**Off-Road Handling**

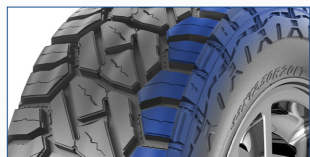
Wraparound shoulder design delivers desired off -road handling and enhanced performance.

SIZE	PLY RATING / LOAD RANGE	LOAD INDEX / SPEED SYMBOL	STANDARD RIM	OVERALL DIAMETER	SECTION WIDTH	TREAD DEPTH
				(mm/in)	(mm/in)	(mm/32nds)
245/75R16		111 / T	7J	774 / 30.5	248 / 9.8	10.3 / 13.0
265/70R16		112 / T	8J	778 / 30.6	272 / 10.7	10.3 / 13.0
245/70R17		110 / T	7J	776 / 30.6	248 / 9.8	10.3 / 13.0
265/70R17		115 / T	8J	804 / 31.7	272 / 10.7	10.3 / 13.0
265/70R18		116 / T	8J	829 / 32.6	272 / 10.7	10.3 / 13.0
275/55R20		117 XL / T	8½J	810 / 31.9	284 / 11.2	10.3 / 13.0
285/45R22		114 XL / H	9 ½J	815 / 32.1	285 / 11.2	10.3 / 13.0
LT235/75R15	6 / C	104/101 / S	6½J	733 / 28.9	235 / 9.3	12.7 / 16.0
LT215/85R16	10 / E	115/112 / Q	6J	778 / 30.6	216 / 8.5	12.7 / 16.0
LT225/75R16	10 / E	115/112 / Q	6J	750 / 29.5	223 / 8.8	12.7 / 16.0
LT235/85R16	10 / E	120/116 / Q	6½J	812 / 32.0	235 / 9.3	12.7 / 16.0
LT245/75R16	10 / E	120/116 / Q	7J	780 / 30.7	248 / 9.8	12.7 / 16.0
LT255/70R16	10 / E	120/117 / R	7½J	770 / 30.3	260 / 10.2	12.7 / 16.0
LT265/70R16	10 / E	121/118 / R	8J	798 / 31.4	279 / 11.0	12.7 / 16.0
LT265/75R16	10 / E	123/120 / Q	7½J	810 / 31.9	267 / 10.5	12.7 / 16.0
LT285/75R16	10 / E	126/123 / Q	8J	840 / 33.1	286 / 11.3	12.7 / 16.0
LT315/75R16	10 / E	127/124 / Q	8½J	878 / 34.6	313 / 12.3	12.7 / 16.0
LT235/80R17	10 / E	120/117 / Q	6 ½J	808 / 31.8	235 / 9.3	12.7 / 16.0
LT245/70R17	10 / E	119/116 / R	7J	750 / 29.5	248 / 9.8	12.7 / 16.0
LT245/75R17	10 / E	121/118 / Q	7J	800 / 31.5	248 / 9.8	12.7 / 16.0
LT265/70R17	10 / E	121/118 / S	8J	810 / 31.9	272 / 10.7	12.7 / 16.0
LT285/70R17	10 / E	121/118 / S	8½J	838 / 33.0	292 / 11.5	12.7 / 16.0
LT265/70R18	10 / E	124/121 / S	8J	835 / 32.9	272 / 10.7	12.7 / 16.0
LT275/65R18	8 / D	121 / 119 / Q	8J	821 / 32.3	279 / 11.0	12.7 / 16.0
LT275/65R18	10 / E	123/120 / Q	8J	821 / 32.3	279 / 11.0	12.7 / 16.0
LT275/70R18	10 / E	125/122 / S	8J	849 / 33.4	279 / 11.0	12.7 / 16.0
LT285/75R18	10 / E	129/126 / Q	8J	891 / 35.1	286 / 11.3	12.7 / 16.0
LT265/60R20	10 / E	121/118 / S	8J	826 / 32.5	272 / 10.7	12.7 / 16.0
LT275/55R20	10 / E	120/117 / S	8½J	816 / 32.1	284 / 11.2	12.7 / 16.0
LT275/65R20	10 / E	126/123 / S	8J	872 / 34.3	279 / 11.0	12.7 / 16.0
LT285/55R20	10 / E	122/119 / S	9J	828 / 32.6	297 / 11.7	12.7 / 16.0
LT285/60R20	10 / E	125/122 / R	8½J	856 / 33.7	292 / 11.5	12.7 / 16.0
LT285/65R20	10 / E	127/124 / Q	8½J	884 / 34.8	292 / 11.5	12.7 / 16.0
LT305/55R20	12 / F	125/122 / Q	9 ½J	844 / 33.2	316 / 12.4	12.7 / 16.0



# NEOMAX-RT

Rugged Terrain



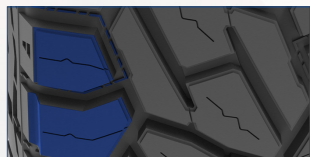
### Balanced Traction and Comfortability

Innovative hybrid tread design provides the perfect balance between off-road performance and on-road comfortable ride.



### Robust Off-Road Performance

Precisely engineered tread design with enhanced casing package ensures outstanding off-road performance where needed most.



### Aggressive But Smooth

Optimized block pattern with special pitch alignment provides a smooth onroad ride.

## NEOMAX-RT SIZE & SPECIFICATION

SIZE	PLY RATING / LOAD RANGE	LOAD INDEX / SPEED SYMBOL	STANDARD RIM	OVERALL DIAMETER (mm/in)	SECTION WIDTH (mm/in)	TREAD DEPTH (mm/32nds)
LT265/75R16	10 / E	123/120 / Q	7½J	810 / 31.9	267 / 10.5	13.5 / 17.0
LT285/75R16	10 / E	126/123 / Q	8J	840 / 33.1	286 / 11.3	13.5 / 17.0
LT285/70R17	10 / E	121/118 / Q	8½J	838 / 33.0	292 / 11.5	13.5 / 17.0
LT305/65R17	12 / F	121/118 / Q	9J	828 / 32.6	311 / 12.2	13.5 / 17.0
LT315/70R17	12 / F	121/118 / Q	9½J	880 / 34.6	323 / 12.7	13.5 / 17.0
LT275/70R18	10 / E	125/122 / Q	8J	849 / 33.4	279 / 11.0	13.5 / 17.0
LT285/65R18	10 / E	125/122 / Q	8½J	833 / 32.8	292 / 11.5	13.5 / 17.0
LT305/60R18	12 / F	126/123 / Q	9J	823 / 32.4	311 / 12.2	13.5 / 17.0
LT305/70R18	12 / F	128/125 / Q	9J	885 / 34.8	311 / 12.2	13.5 / 17.0
LT325/65R18	12 / F	127/124 / Q	9½J	879 / 34.6	331 / 13.0	13.5 / 17.0
LT265/60R20	10 / E	121/118 / Q	8J	826 / 32.5	272 / 10.7	13.5 / 17.0
LT275/65R20	10 / E	126/123 / Q	8J	866 / 34.1	279 / 11.0	13.5 / 17.0
LT285/55R20	10 / E	122/119 / Q	9J	828 / 32.6	297 / 11.7	13.5 / 17.0
LT305/55R20	12 / F	125/122 / Q	9½J	850 / 33.5	316 / 12.4	13.5 / 17.0
LT325/60R20	12 / F	126/123 / Q	9½J	898 / 35.4	331 / 13.0	13.5 / 17.0
31x10.50R15LT	6 / C	109 / Q	8½J	781 / 30.7	268 / 10.6	13.5 / 17.0
33x12.50R18LT	12 / F	122 / Q	10J	832 / 32.8	318 / 12.5	13.5 / 17.0
35x12.50R18LT	12 / F	128 / Q	10J	883 / 34.8	318 / 12.5	13.5 / 17.0
33x12.50R20LT	12 / F	119 / Q	10J	832 / 32.8	318 / 12.5	13.5 / 17.0
35x12.50R20LT	12 / F	125 / Q	10J	883 / 34.8	318 / 12.5	13.5 / 17.0
37x12.50R20LT	12 / F	128 / Q	11J	934 / 36.8	345 / 13.6	13.5 / 17.0
33x12.50R22LT	12 / F	114 / Q	10J	832 / 32.8	318 / 12.5	13.5 / 17.0
35x12.50R22LT	12 / F	121 / Q	10J	883 / 34.8	318 / 12.5	13.5 / 17.0



# NEOMAX-MT

Mud Terrain



## NEOMAX-MT SIZE & SPECIFICATION

SIZE	PLY RATING / LOAD RANGE	LOAD INDEX / SPEED SYMBOL	STANDARD RIM	OVERALL DIAMETER	SECTION WIDTH	TREAD DEPTH
				(mm/in)	(mm/in)	(mm/32nds)
LT245/75R16	10 / E	120/116 / Q	7J	780 / 30.7	248 / 9.8	15.5 / 19.5
LT285/75R16	10 / E	126/123 / Q	8J	840 / 33.1	286 / 11.3	15.5 / 19.5
LT305/70R16	12 / F	128/125 / Q	9J	834 / 32.8	311 / 12.2	15.5 / 19.5
LT285/65R18	10 / E	125/122 / Q	8½J	833 / 32.8	292 / 11.5	15.5 / 19.5
LT305/55R20	12 / F	125/122 / Q	9 ½J	844 / 33.2	316 / 12.4	15.5 / 19.5
LT325/60R20	12 / F	126/123 / Q	9½J	898 / 35.4	331 / 13.0	15.5 / 19.5
31x10.50R15LT	6 / C	109 / Q	8½J	775 / 30.5	268 / 10.6	15.5 / 19.5
33x12.50R15LT	6 / C	108 / Q	10J	826 / 32.5	318 / 12.5	15.5 / 19.5
35x12.50R15LT	6 / C	113 / Q	10J	877 / 34.5	318 / 12.5	15.5 / 19.5
33x12.50R17LT	12 / F	121 / Q	10J	832 / 32.8	318 / 12.5	15.5 / 19.5
35x12.50R17LT	12 / F	121 / Q	10J	883 / 34.8	318 / 12.5	15.5 / 19.5
37x12.50R17LT	8 / D	124 / Q	10J	934 / 36.8	318 / 12.5	15.5 / 19.5
37x13.50R17LT	10 / E	121 / Q	11J	928 / 36.5	345 / 13.6	15.5 / 19.5
33x12.50R18LT	12 / F	122 / Q	10J	832 / 32.8	318 / 12.5	15.5 / 19.5
35x12.50R18LT	12 / F	128 / Q	10J	883 / 34.8	318 / 12.5	15.5 / 19.5
33x12.50R20LT	12 / F	119 / Q	10J	832 / 32.8	318 / 12.5	15.5 / 19.5
35x12.50R20LT	12 / F	125 / Q	10J	883 / 34.8	318 / 12.5	15.5 / 19.5
37x13.50R20LT	12 / F	128 / Q	11J	934 / 36.8	345 / 13.6	15.5 / 19.5
33x12.50R22LT	12 / F	114 / Q	10J	832 / 32.8	318 / 12.5	15.5 / 19.5
35x12.50R22LT	12 / F	121 / Q	10J	883 / 34.8	318 / 12.5	15.5 / 19.5
37x13.50R22LT	12 / F	128 / Q	11J	928 / 36.5	345 / 13.6	15.5 / 19.5
37x13.50R24LT	12 / F	124 / Q	11J	934 / 36.8	345 / 13.6	15.5 / 19.5



### Maximum Traction

Advanced tread compound and aggressive block design ensures maximum traction and grip in severe off-road conditions.



### Tough and Durable

Hardworking wraparound tread with enhanced steel belt package construction optimizes sidewall traction and puncture resistance in deep mud, sand and rocks.



### Confident Handling

Self-cleaning tread and shoulder area guarantees consistent traction and grip power.